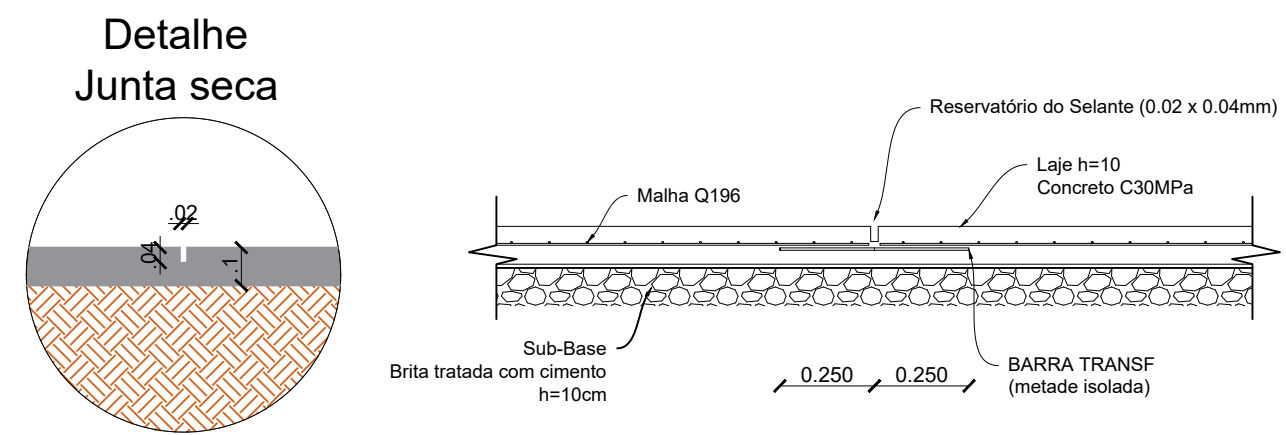

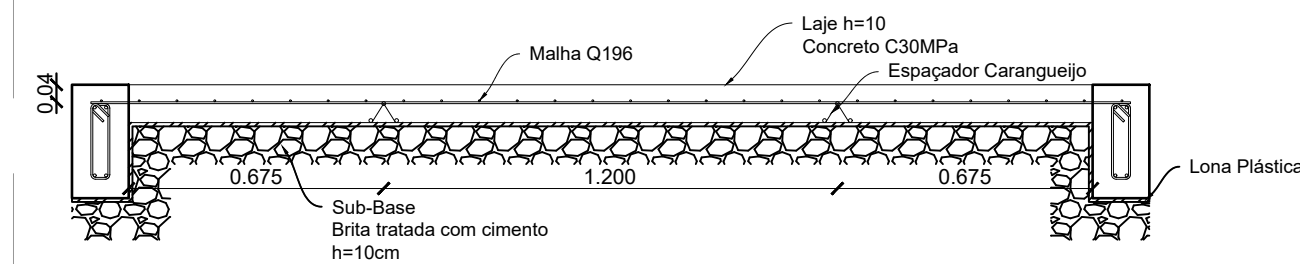
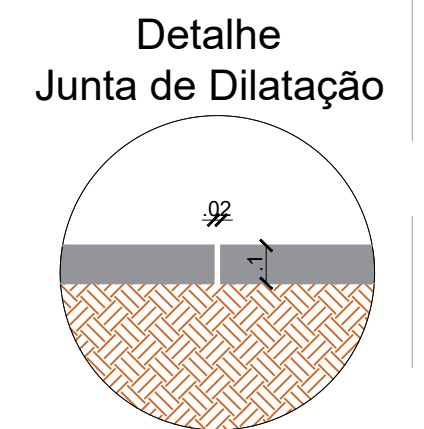


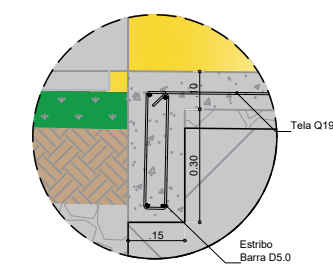
DET. CALÇADA
ESC.: 1/75



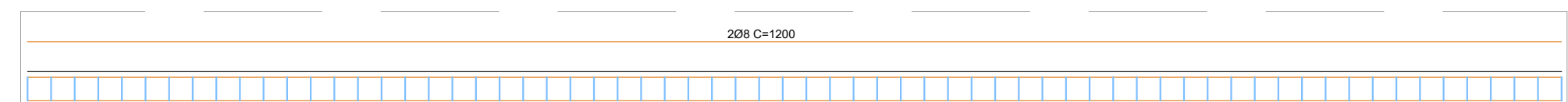
 DET. JUNTAS DA CALÇADA
ESC.: 1/20



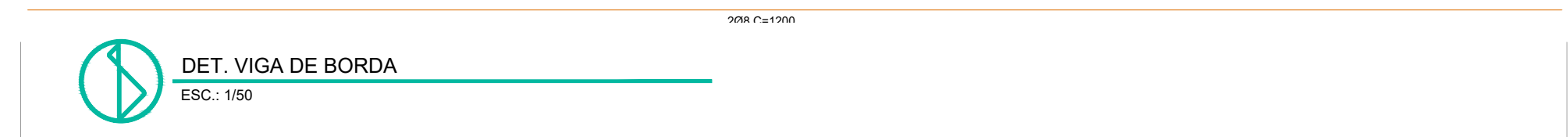
DET. CORTE LONGITUDINAL DA CALÇADA



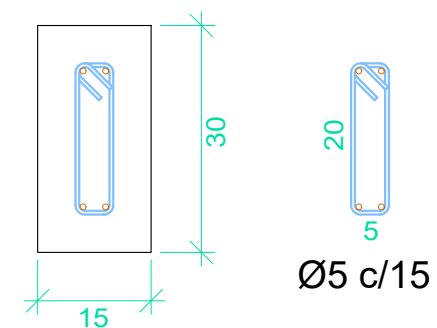
DET. VIGA DE BORDO
ESC.: 1/20




DET. VIGA DE BORDA
ESC.: 1/50



Seção Típica



DET. SEÇÃO VIGA BORDO
ESC.: 1/20

NOTAS:								OBRA:	ESTRUTURAL PISO CALÇADA			
	0							LOCAL:	Av. Francisco Lacerda de Aguiar - Rodosol Município de Piúma ES	CONTEÚDO: DET. CALÇADA		
	REV.	DESCRIÇÃO	PROJ.	DES.	VER.	DATA						
	REVISÕES											
	APROVAÇÃO:							RESPONSÁVEL TÉCNICO:	MARCOS FELIPE PINTO DE SOUZA CREA-ES 0050929/D	ESCALA:	DATA:	PRANCHA:
								INDICADA	26/04/22	01/01	REV 0.0	